



Changing default Logon in XPE

A Technote by
Systems Engineering

September 2005

Summary

This technote describes how to change default logon to Administrator instead of User.

Audience

1st Level Support, Systems Engineering Group, Customers

Affected Products

All 9000 series Terminal

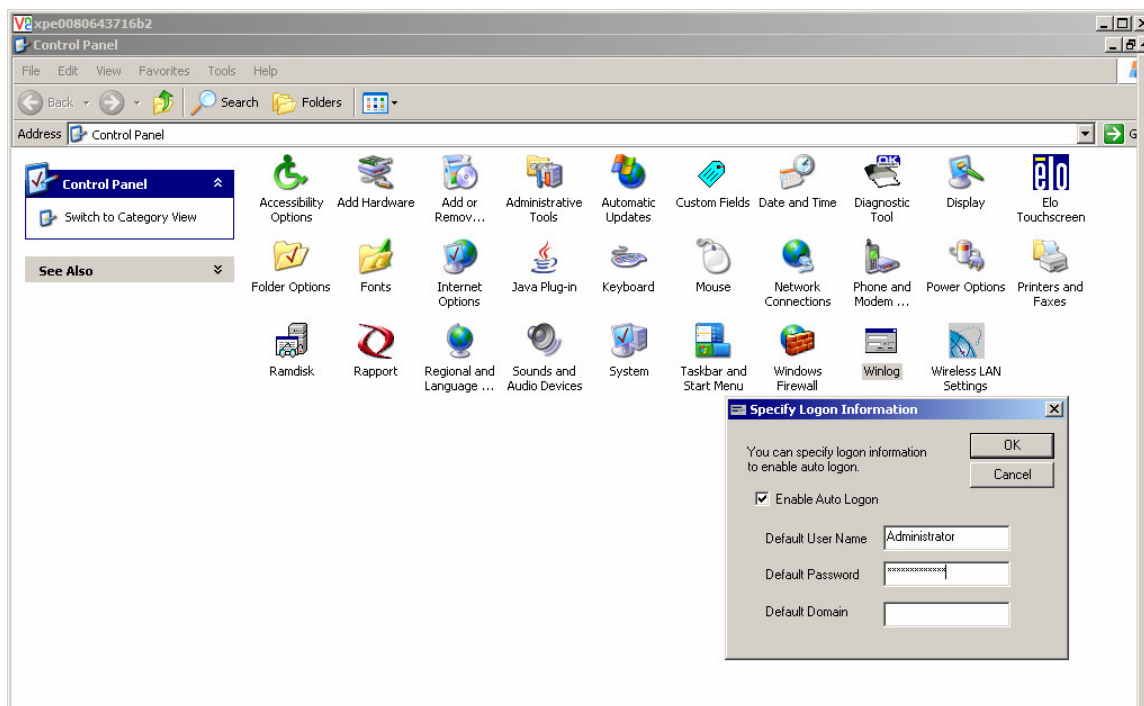
Requirements

Some end-users might require to logon as Administrator automatically in our XPE terminals

Procedure/Solution

1. Login as Administrator
2. Go to Control Panel→Winlog
3. Change the Default User name to Administrator and password as *Administrator*
4. Flush the write filter cache by right clicking write filter icon in system tray and clicking Configure Ewf→Commit Changes. If you are using SP1 build disable write filter and reboot.

Example:



Limitation of Liability

IN NO EVENT SHALL MANUFACTURER, MANUFACTURER'S SUPPLIERS, ANY THIRD-PARTY PRODUCER, OR ANY OTHER PARTY THAT HAS BEEN INVOLVED IN THE CREATION, PRODUCTION, OR DELIVERY OF THE DOCUMENT BE LIABLE FOR ANY DIRECT, CONSEQUENTIAL, INCIDENTAL, INDIRECT, OR SPECIAL DAMAGES, INCLUDING WITHOUT LIMITATION LOST PROFITS OR LOSSES RESULTING FROM BUSINESS INTERRUPTION OR LOSS OF DATA, REGARDLESS OF THE FORM OF ACTION OR LEGAL THEORY UNDER WHICH THE LIABILITY MAY BE ASSERTED, EVEN IF ADVISED OF THE POSSIBILITY OR LIKELIHOOD OF SUCH DAMAGES.

THIS DOCUMENT IS PROVIDED "AS IS" WITH NO WARRANTIES WHATSOEVER, INCLUDING ANY WARRANTY OF MERCHANTABILITY, FITNESS FOR ANY PARTICULAR PURPOSE, OR ANY WARRANTY OTHERWISE ARISING OUT OF ANY PROPOSAL, SPECIFICATION OR SAMPLE. MANUFACTURER DOES NOT WARRANT THAT THE INFORMATION CONTAINED IN THE DOCUMENT OR ANY SOFTWARE REFERRED THEREIN WILL MEET YOUR REQUIREMENTS OR THAT THE OPERATION WILL BE UNINTERRUPTED OR ERROR FREE. SOME JURISDICTIONS DO NOT ALLOW THE LIMITATION OR EXCLUSION OF LIABILITY FOR INCIDENTAL OR CONSEQUENTIAL DAMAGES, SO THE ABOVE LIMITATION OR EXCLUSION MAY NOT APPLY TO YOU.



If you have a technical enquiry please use the online knowledge portal at <http://www.wyse.com/serviceandsupport/support/askwyse.asp> or contact the numbers mentioned below.

Wyse Technology Inc.
3471 North First Street
San Jose, CA 95134-1801

Wyse Sales:
800 GET WYSE
(800 438 9973)

Or send email to:
sales@wyse.com

International Sales:
Australia 61 2 9319 3388
France 33 1 39 44 63 85
Germany 49 89 460099 26
Taiwan 886 3 577 9261
UK 44 118 982 8335
United States 408 473 1200

Visit our websites at:
<http://www.wyse.com.au>
<http://www.wyse.fr>
<http://www.wyse.de>
<http://www.wyse.com.tw>
<http://www.wyse.co.uk>
<http://www.wyse.com>

Wyse Customer Service Center:
800 800 WYSE
(800 800 9973)

© 2005 Wyse Technology Inc. All rights reserved. This material is copyrighted. You may not reproduce, transmit, transcribe, store in a retrieval system, or translate into any language or computer language, in any form or by any means, electronic, mechanical, magnetic, optical, chemical, manual or otherwise, any part of this publication without express written permission. Wyse, WY, and WyseWorks are registered trademarks, and the Wyse logo, Winterm logo, Wyse, and Winterm are trademarks of Wyse Technology Inc. ICA is a registered trademark and MetaFrame is a trademark of Citrix Systems Inc. Rapport is a registered trademark of Rapport Technologies, Inc., a division of Wyse Technology Inc. Microsoft, Windows, and Windows NT are registered trademarks of Microsoft Corporation. Other product names mentioned herein are for identification purposes only and may be trademarks and/or registered trademarks of their respective companies. 09/04 880924-45 Rev. A